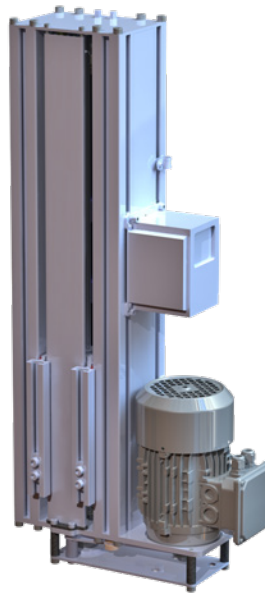


LINEAR GUIDE LIFTER IS 180 AC



IS 180 AC

Linear Guide Lifter	Unit	IS180Z04500800EEBA1 (KGT 16x10)
Article number		
Push force max.	N	1000
Pull force**	N	-
Torque static	Nm	2200
Torque dynamic	Nm	1100
Speed (no load)	mm/s	120
Installation dimensions/stroke Standard**	mm	800/450 (max. 1000/650)
Runner profile length**	mm	175
Installation dimension formula	mm	Length: stroke + 350
Fixing points on profile***		Slot nuts M8
Voltage	V/DC	230V/50Hz
Max. power input	W	550
Max. power consumption	A	5
Cable length	mm	2000
Plug type	Type	EU-Plug
Duty cycle (S3)	min	S3 90% based on 10 min
Environment temperature	°C	+ 10 to +40
Protection rate*	IP	40
Insulation class		I
Weight	kg	36
Integrated limit switches****		yes

Stroke tolerance (+/- 2mm) and operating speed depending on load and voltage

*Depends on installation position

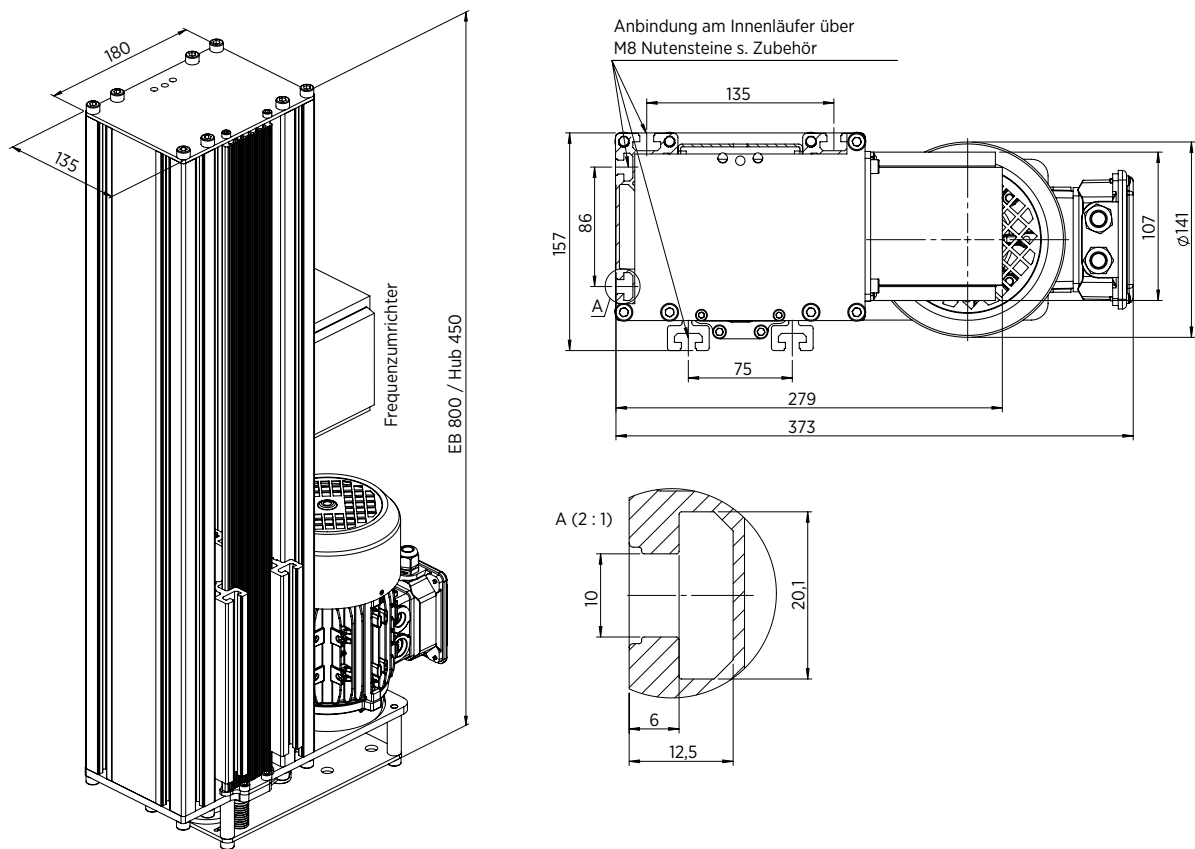
**Other length on demand

***Slot nuts M8

****Adjustable end switch

Useable Footswitch EL-Fuss-II-LD7

LINEAR GUIDE LIFTER IS 180 AC



The process lift IS 180 AC is a linear guide column, open single sided with a motor-driven adjustable, runner profile running on roller bearings. Due to the extremely stable bearings, high torques of up to 1100 Nm can be absorbed and loads of up to 1000 N can be moved. With a duty cycle of max. 90% and travel speeds of up to 100mm/s, the system is particularly suitable for industrial applications with clocked processes such as in packaging systems or for height compensation in conveyor technology. The AC motor is operated via a frequency converter. The parameters of this can be adapted to the specific application. A ball screw drive with a backup nut drives the runner via a toothed belt.