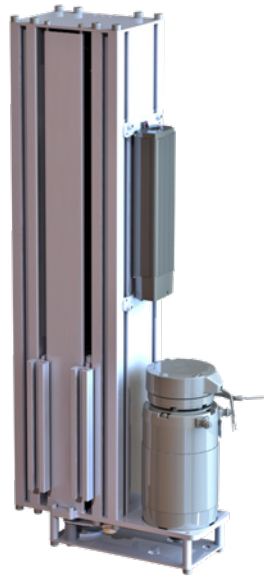


LINEAR GUIDE LIFTER IS 180 DC



IS 180 DC

Linear Guide Lifter	Unit	IS180Q04350800EEC24
Article number		Trapezoidal thread Tr 20 x 4
Push force max.	N	1000
Pull force	N	-
Torque dynamic	Nm	2200
Drehmoment dynamisch	Nm	1100
Speed (no load)	mm/s	40
Installation dimensions/stroke Standard**	mm	800/435 (max. 1000/635)
Runner profile length**	mm	175
Installation dimension formula	mm	Length: stroke + 365
Fixing points on profile***		Slot nuts M8
Voltage	V/DC	30V
Max. power input	W	270
Max. power consumption	A	9
Cable length	mm	2000
Plug type	Type	EU-Plug
Duty cycle (S3)	min	S3 50% based on 10 min
Environment temperature	°C	+ 10 to +40
Protection rate*	IP	40
Insulation class		I
Weight	kg	36
Integrated limit switches****		yes

Stroke tolerance (+/- 2mm) and operating speed depending on load and voltage

*Depends on installation position

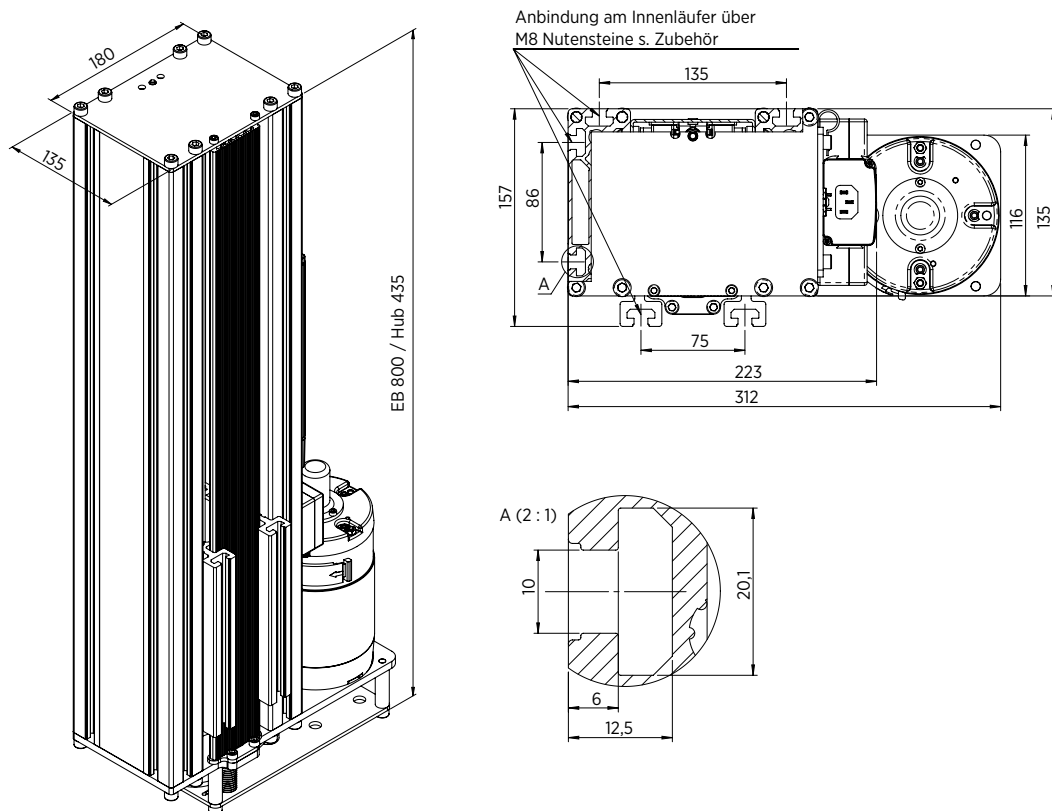
**Other length on demand

***Slot nuts M8

****Adjustable end switch

Useable Footswitch EL-Fuss-II-LD7

LINEAR GUIDE LIFTER IS 180 DC



The process lift IS 180 DC is a linear guide column, open single sided with a motor-driven adjustable, runner profile running on roller bearings. Due to the extremely stable bearings, high torques of up to 1100 Nm can be absorbed and loads of up to 1000 N can be moved. With a duty cycle of max. 50% and travel speeds of up to 40mm/s, the system is particularly suitable for industrial applications with clocked processes such as in packaging systems or for height compensation in conveyor technology. The DC motor is operated via a Syncontrol type motor controller. The parameters of this controller can be adapted to the specific application. The process lift and its runner profile is driven by a trapezoidal thread spindle. Synchronous operation of two systems is also possible.